



Rebuild and Adjustment Manual For Summit Racing Street & Strip Carburetors

WARNING! These instructions must be read and fully understood before beginning installation. Failure to follow these instructions may result in poor performance, vehicle damage, personal injury, or death. If these instructions are not fully understood, installation should not be attempted.

TABLE OF CONTENTS

READ THIS FIRST	2
LOCATING THE LIST NUMBER	2
DISASSEMBLY.....	2
EXPLODED VIEW – M2008.....	3
NOMENCLATURE – M2008.....	4
CLEANING AND CARE.....	4
REASSEMBLY.....	5
SPECIAL INSTRUCTIONS FOR ALL CARBURETORS.....	5
POWER VALVE IDENTIFICATION	5
CARBURETOR ADJUSTMENTS	6
CARBURETOR SPECIFICATIONS	8

READ THIS FIRST

This is a typical view type instruction sheet for Summit Racing Street & Strip M2008 carburetors. This kit may also contain universal part assortments, resulting in throw away or an excess in the number of parts that are actually required for servicing any one carburetor. In the case of duplicate gaskets or parts, compare with old pieces. When reassembling the carburetor, use the adjustment specification list to make the necessary adjustments for the list number of your carburetor.

Throughout this instruction sheet, there will be **WARNINGS** and **NOTES**. Please read these, as they contain valuable information that can save you time and money. It is our intent to provide the best possible products for our customers: products that perform properly and satisfy your expectations. Should you need information of parts assistance, please contact our Technical Service Department at 1-330-630-0240, Monday through Friday, 9 am to 9 pm Eastern Time. Please have the part number of the product you purchased when you call.

LOCATING THE PART NUMBER

The part number for a Model Summit Street & Strip carburetor can be found on the **right side of choke air horn**. Below the part number is a date code that will contain no more than four (4) digits. See Figure below.

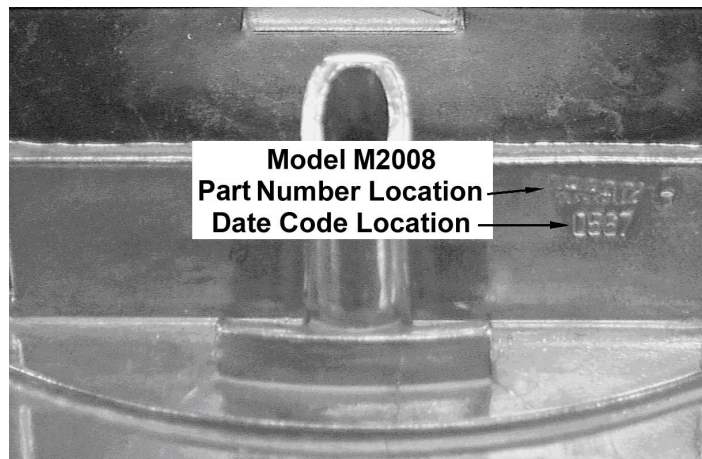


Figure 1

DISASSEMBLY

Rest the carburetor on a repair stand to avoid damage to the throttle plates during renewal procedures. Use the exploded view (Fig 2), as a guide and follow the numerical sequence in general to disassemble unit far enough to permit cleaning and inspection. DO NOT remove throttle plates or shaft. Turn the idle needles clockwise, until lightly seated, recording the number of turns required to seat the needles. Remove the needles. This procedure is necessary to reinstall the idle needles after renewing the carburetor.

EXPLODED VIEW – M2008

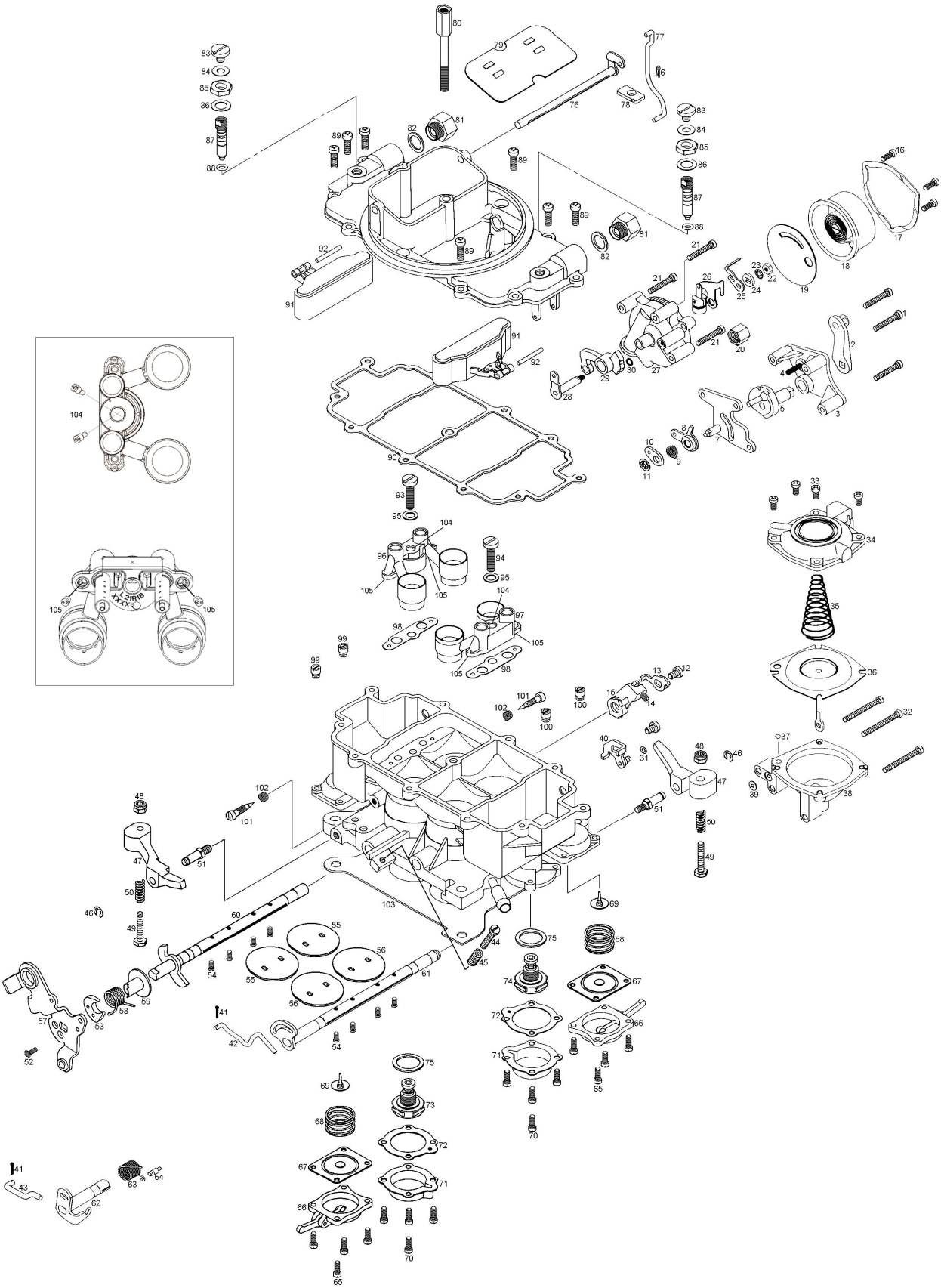


Figure 2

NOMENCLATURE – M2008

Ref. No.	Description	Ref. No.	Description
1	Fast Idle Cam Plate Screw	2	Choke Lever and Swivel Assembly
3	Fast Idle Cam Plate	4	Fast Idle Cam Spring
5	Fast Idle Cam	6	Choke Rod Retainer
7	Choke Lever Back-up Plate	8	Choke Rod Lever Molded
9	Choke Lever Spring	10	Choke Spring Retainer Washer
11	Push Nut Fastener	12	Fast Idle Cam Lever Screw
13	Cam Pickup Lever	14	Fast Idle Adjustment Screw
15	Fast Idle Cam Lever	16	Thermostat Cap Clamp Screw
17	Thermostat Cap Clamp	18	Thermostat & Cap Assembly Indexed
19	Thermostat Cap Gasket	20	Compression Nut
21	Choke Housing Screw	22	Hex Nut
23	Lockwasher	24	Choke Thermostat Lever Spacer
25	Choke Thermostat Lever	26	Thermostat Lever & Piston Assembly
27	Choke Housing & Plugs Assembly	28	Choke Housing Shaft & Lever Assembly
29	Fast Idle Cam Assembly	30	Choke Housing Gasket
31	E-Ring Retainer	32	Secondary Diaphragm Housing Screw
33	Secondary Diaphragm Cover Screw	34	Secondary Diaphragm Cover
35	Secondary Diaphragm Spring	36	Secondary Diaphragm & Link Assembly
37	Check Ball	38	Secondary Diaphragm Housing
39	Secondary Diaphragm Housing Gasket	40	Secondary Diaphragm Lever Assembly
41	Cotter Pin-Throttle Connecting Rod	42	Secondary Connecting Rod
43	Secondary Operating Link	44	Throttle Stop Screw
45	Throttle Stop Adjustment Screw Spring	46	E-Ring Retainer
47	Pump Operating lever Assembly	48	Fiber Locking Nut
49	Pump Lever Adjustment Screw	50	Pump Lever Adjustment Screw Spring
51	Pump Lever Stud	52	Pump Cam Screw
53	Pump Cam	54	Throttle Plate Screw
55	Primary Throttle Plate	56	Secondary Throttle Plate
57	Primary Throttle Lever	58	Primary Throttle Return Spring
59	Throttle Lever Bushing	60	Throttle Shaft & Stop Lever Assembly
61	Secondary Throttle Shaft & Stop Lever Assembly (Vacuum Secondary)	62	Secondary Throttle Shaft & Stop Lever Assembly (Mechanical Secondary)
63	Throttle Return Spring	64	Throttle Return Spring Pin
65	Pump Diaphragm Cover Screw	66	Accelerator Pump Diaphragm Cover Assembly
67	Accelerator Pump Diaphragm Assembly	68	Pump Diaphragm Return Spring
69	Pump Check Valve	70	Power Valve Cover Screw
71	Power Valve Cover	72	Power Valve Cover Gasket
73	Power Valve - Primary	74	Power Valve - Secondary
75	Power Valve Gasket	76	Choke Shaft and Lever Assembly
77	Choke Rod	78	Choke Rod Seal
79	Choke Plate	80	Air Cleaner Stud
81	Fuel Inlet Fitting	82	Fuel Inlet Fitting Gasket
83	Fuel Valve Seat Screw	84	Seat Lock Screw Gasket
85	Fuel Valve Seat Lock Nut	86	Needle & Seat Adjustment Nut Gasket
87	Fuel Inlet Needle & Seat Assembly	88	O-Ring Seal
89	Air Horn Screw	90	Airhorn Gasket
91	Float & Tab Assembly	92	Float Shaft
93	Nozzle Bar Screw - Primary	94	Nozzle Bar Screw - Secondary
95	Nozzle Bar Screw Gasket	96	Primary Nozzle Bar Assembly
97	Secondary Nozzle Bar Assembly	98	Nozzle Bar Gasket
99	Primary Main Jet	100	Secondary Main Jet
101	Idle Adjustment Needle	102	Idle Adjustment Needle Spring
103	Flange Gasket	104	Pump Discharge Restrictions 2 ea (Inside Screw Hole)
105	Idle Feed Restrictions 2 ea (Bottom side of Nozzle bar)		

CLEANING AND CARE

Cleaning must be done with carburetor disassembled. Soak parts long enough to soften and remove all foreign material. Use a carburetor solvent, lacquer thinner or denatured alcohol. Make certain the main body is free of all hard carbon deposits. Wash off in suitable solvent. Blow all passages in castings with compress air and check carefully to insure thorough cleaning of obscure areas.

WARNING! DO NOT soak parts containing rubber or plastic material. Serious damage could result.

WARNING! The Carburetor assemblies should only be exposed to carburetor cleaner long enough to permit removal of gum and varnish deposits with a brush. Some assemblies have internal “O” Ring seals, which are not removable, but can be damaged by prolonged exposure to some carburetor cleaning solvents.

REASSEMBLY

Reassemble in reverse order of disassembly. Note the special instructions and follow the calibration numbers in the **SPECIFICATIONS** section in making final adjustments.

Manually operate the throttle lever and choke mechanism, checking for binding or malfunction. Any binding or interference could cause throttle to stick during operation and result in loss of carburetor throttle control (or uncontrolled engine speed).

WARNING! Check carburetor to be sure there are no leaks or flooding, which might cause a fire.

SPECIAL INSTRUCTIONS FOR ALL CARBURETORS

- IDLE ADJUSTING NEEDLES** - Tapered portion of needle must be straight and smooth. If grooved or ridged, a new needle should be installed.
- PUMP INLET CHECK VALVE** - Lubricate tip of new valve and insert in center hole in pump cavity. Pull through from fuel bowl side, until seated.
- THROTTLE SHAFTS** - **DO NOT** remove throttle shafts or plates. If throttle plates are nicked or damaged, it will be necessary to replace them..
- CHECK BALL** - Your kit may contain more than one check ball. The check ball removed from your carburetor should be compared to the new check ball for correct sizing before installation.

POWER VALVE IDENTIFICATION

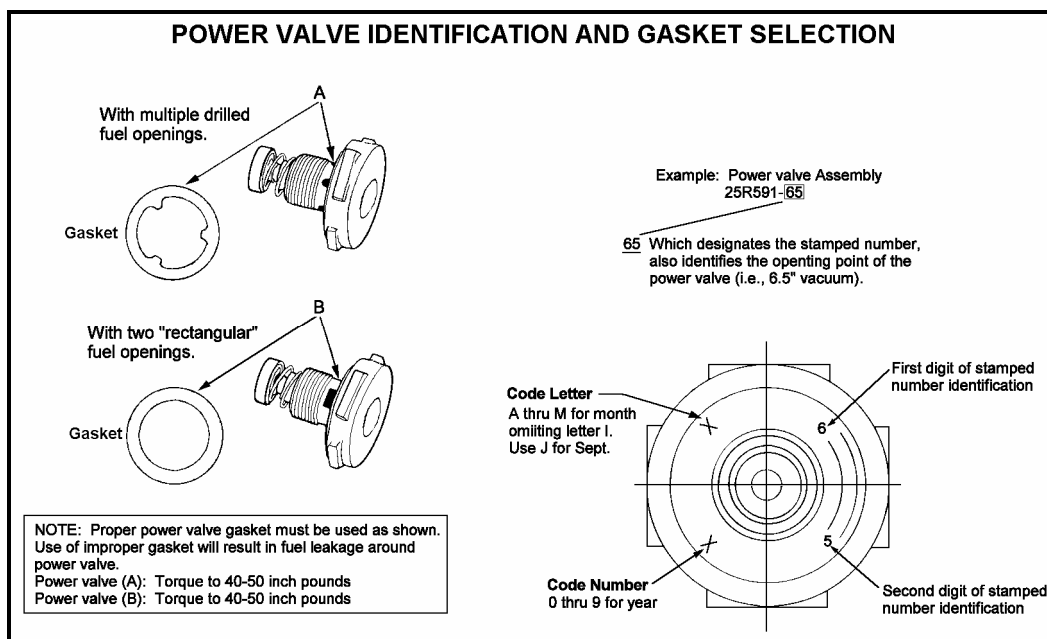


Figure 3

CARBURETOR ADJUSTMENTS

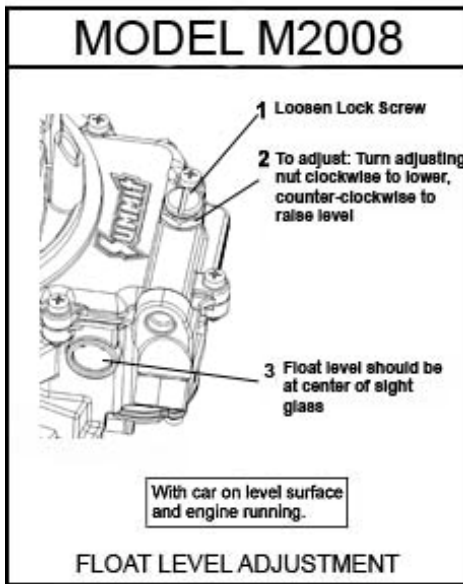


Figure 4

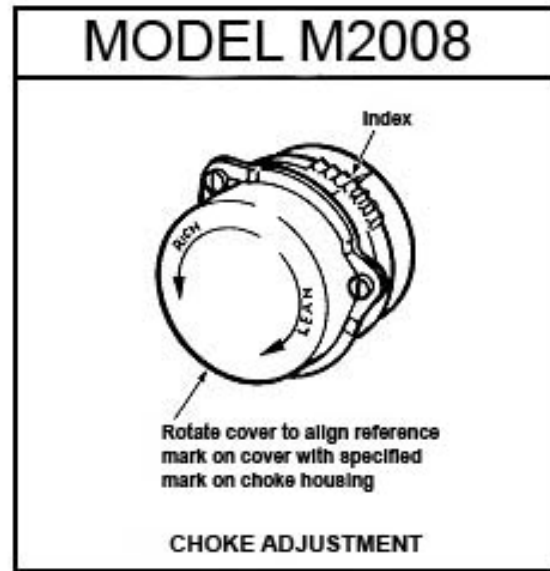


Figure 5

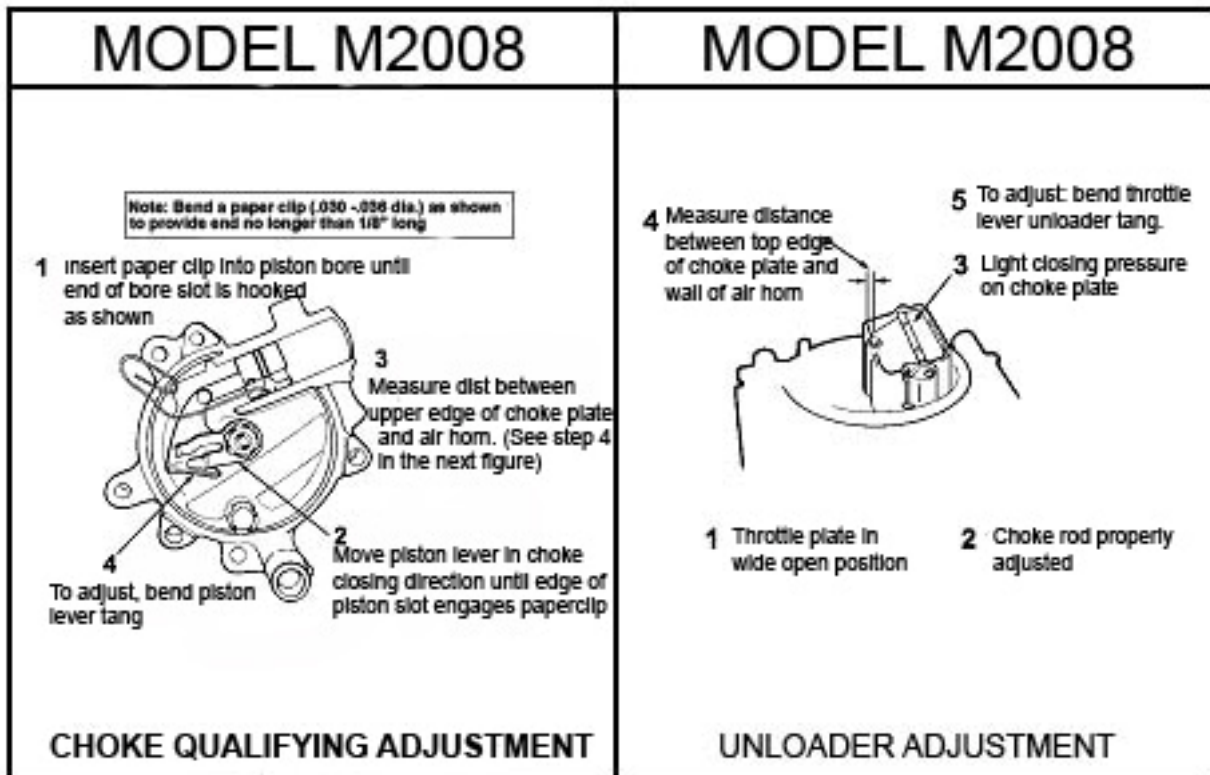


Figure 6

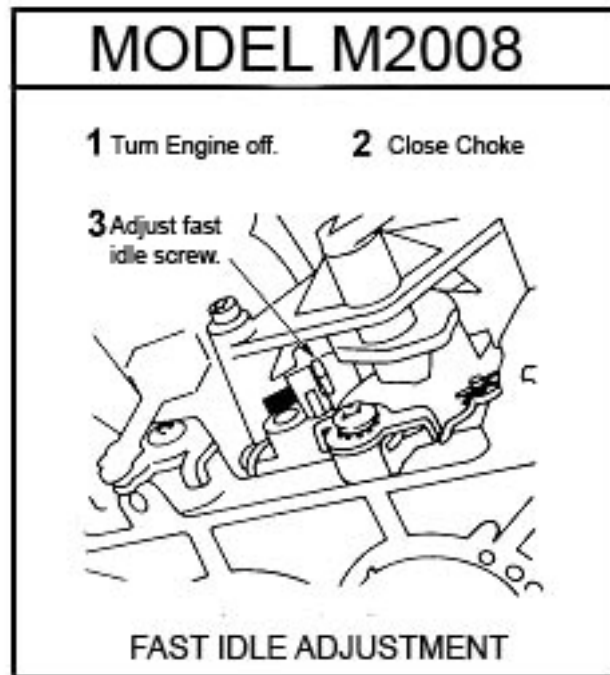


Figure 7

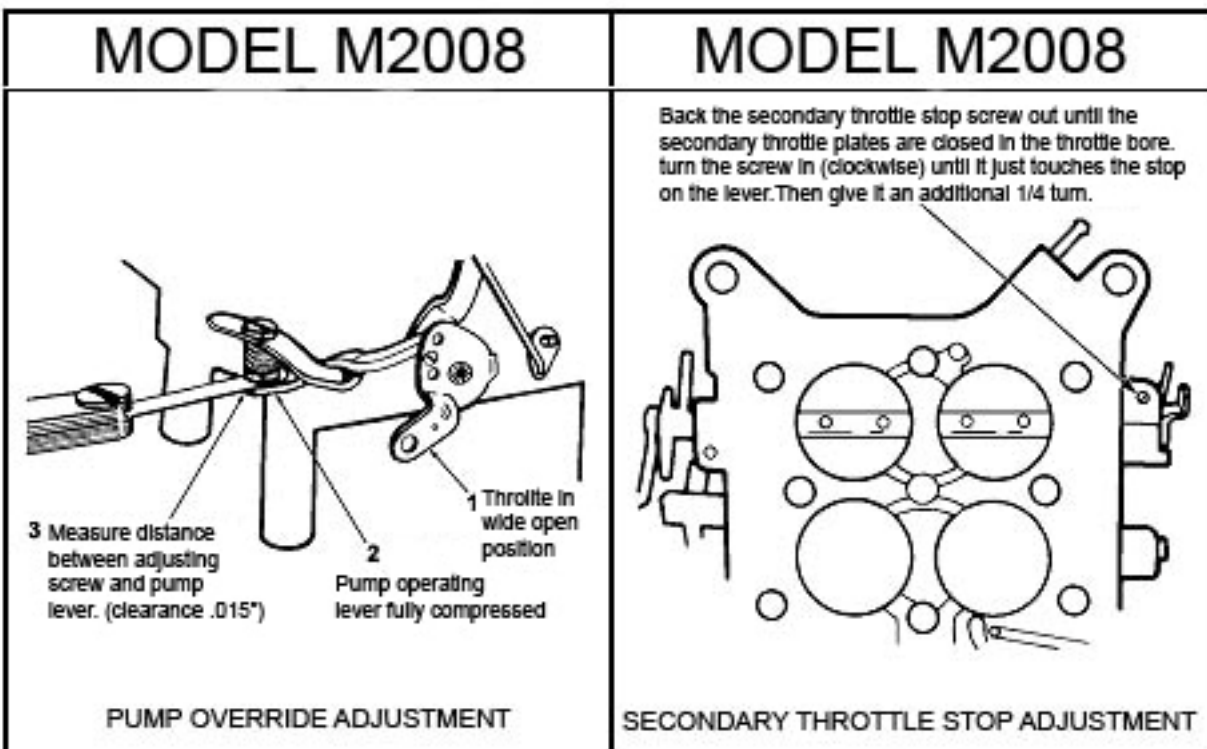


Figure 8

CARBURETOR SPECIFICATIONS

MODEL M2008				
Part Number	Choke Index	Pump Cam position	Choke Quality	Dechoke
SUM-M08600VS	Index	No. 2	.275"	.325"
SUM-M08750VS	Index	No. 2	.275"	.325"
SUM-M08750MS	Index	No. 2	.275"	.325"

**Summit Racing Equipment
1200 Southeast Ave
Tallmadge, OH 44278**

**Technical Service: 1-330-630-3030
Fax: 1-330-630-5333**

**For online help, charts, guides, and tech tips, log on to:
www.summitracing.com**

Printed in U.S.A.
Copyright © 2008

Date: 8-24-2008

**Summit
Racing Equipment**

199R-10496