

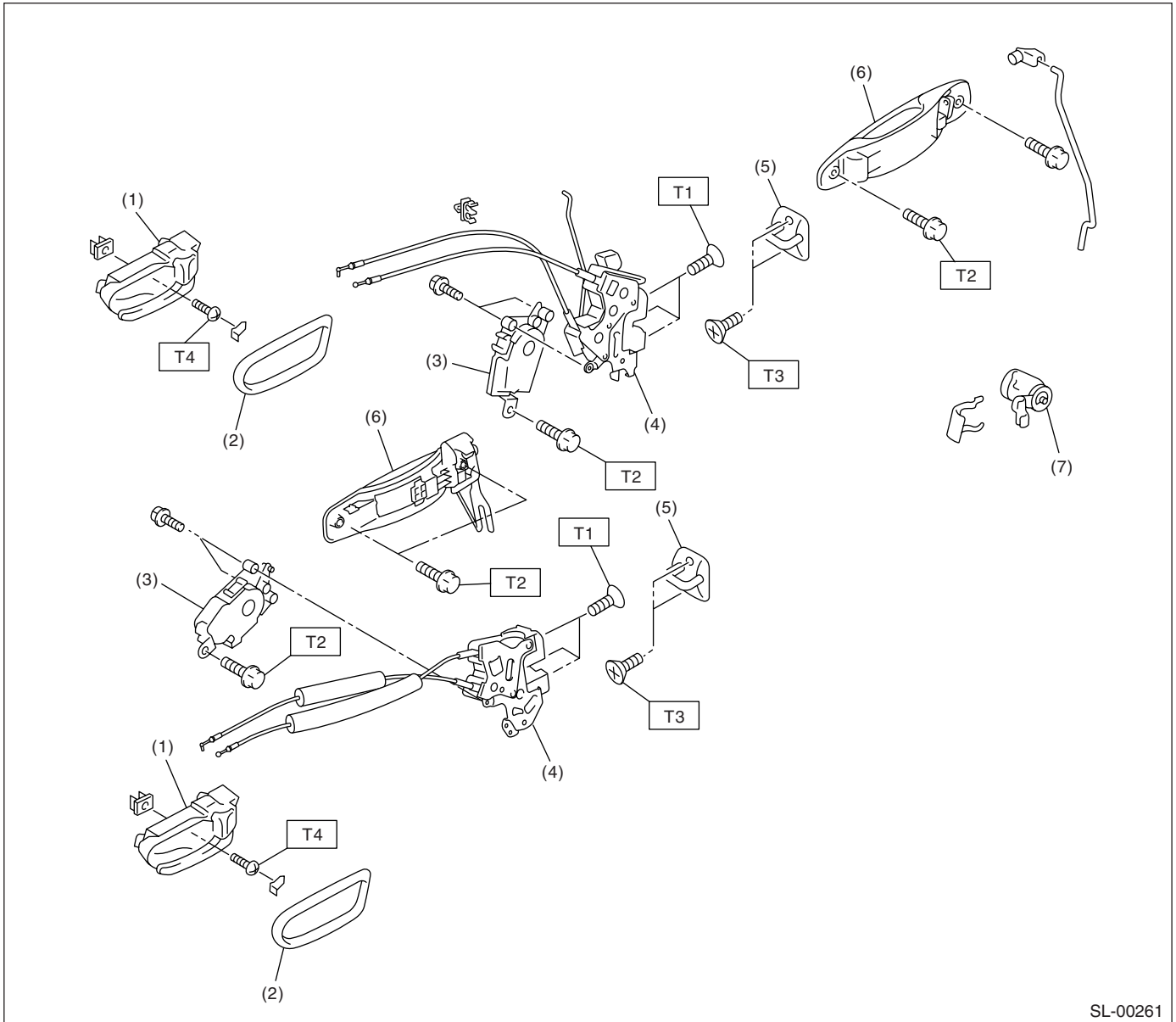
# GENERAL DESCRIPTION

SECURITY AND LOCKS

## 1. General Description

### A: COMPONENT

#### 1. DOOR LOCK ASSEMBLY



SL-00261

- (1) Inner remote ASSY
- (2) Inner remote cover
- (3) Auto-door lock actuator
- (4) Door latch

- (5) Striker
- (6) Door outer handle
- (7) Key cylinder

**Tightening torque: N·m (kgf·m, ft·lb)**

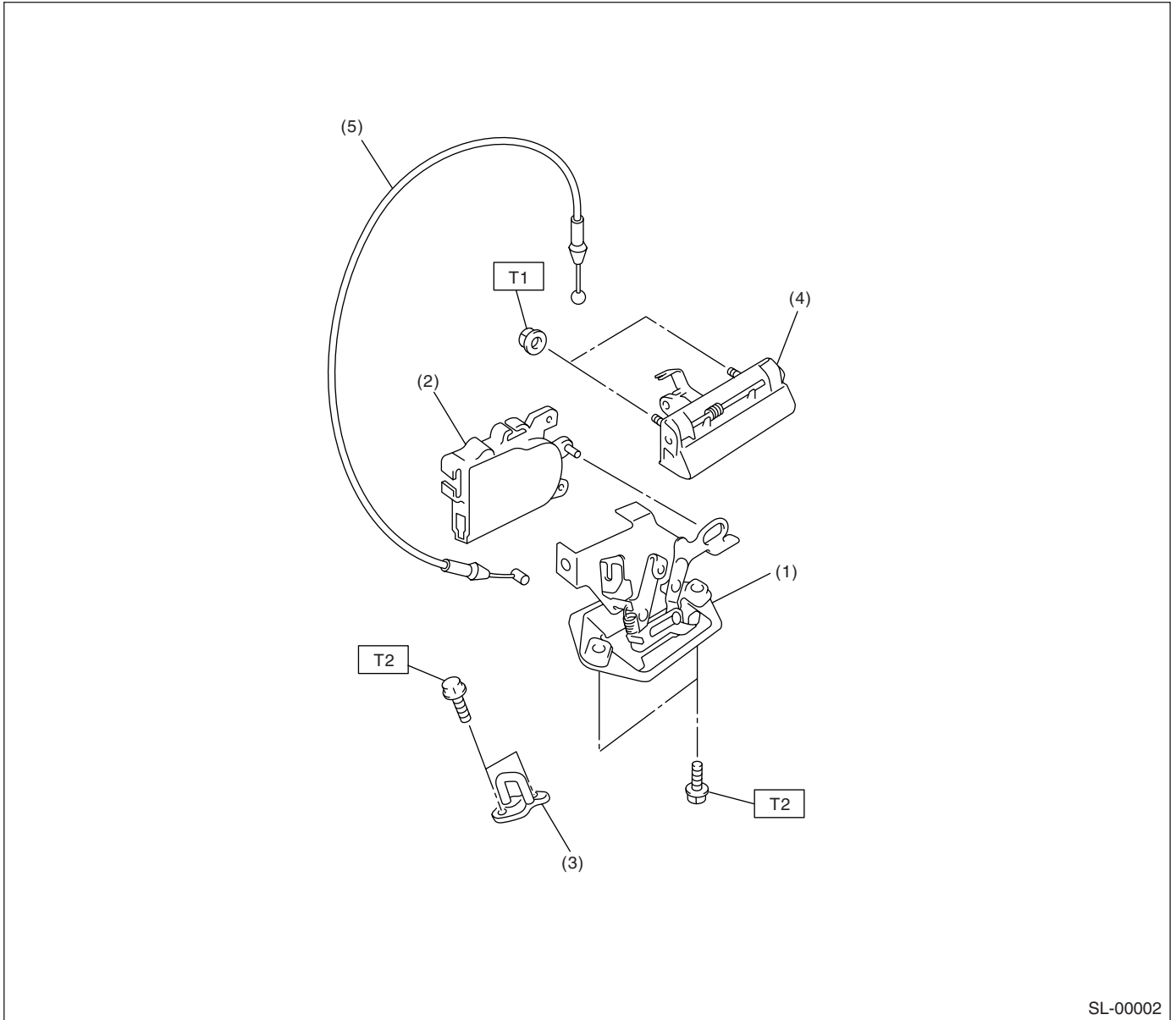
**T1: 6.5 (0.66, 4.8)**

**T2: 7.5 (0.76, 5.5)**

**T3: 18 (1.8, 13.3)**

**T4: 1.5 (0.15, 1.1)**

## 2. REAR GATE LOCK



- (1) Rear gate latch
- (2) Rear gate actuator
- (3) Striker

- (4) Rear gate outer handle
- (5) Cable

**Tightening torque: N·m (kgf·m, ft·lb)**

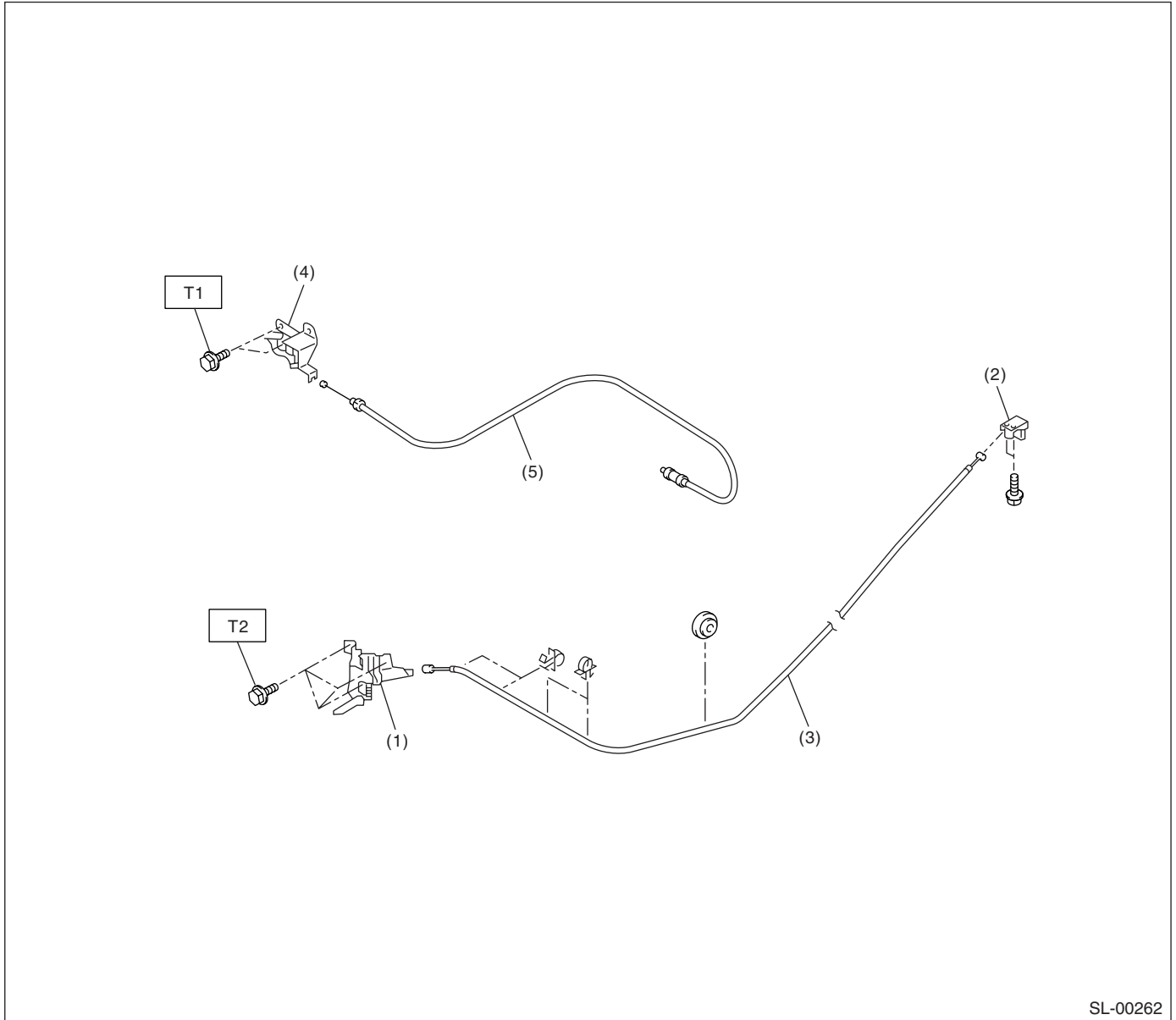
**T1: 7.5 (0.75, 5.4)**

**T2: 25 (2.5, 18.4)**

# GENERAL DESCRIPTION

## SECURITY AND LOCKS

### 3. HOOD LOCK AND REMOTE OPENERS



SL-00262

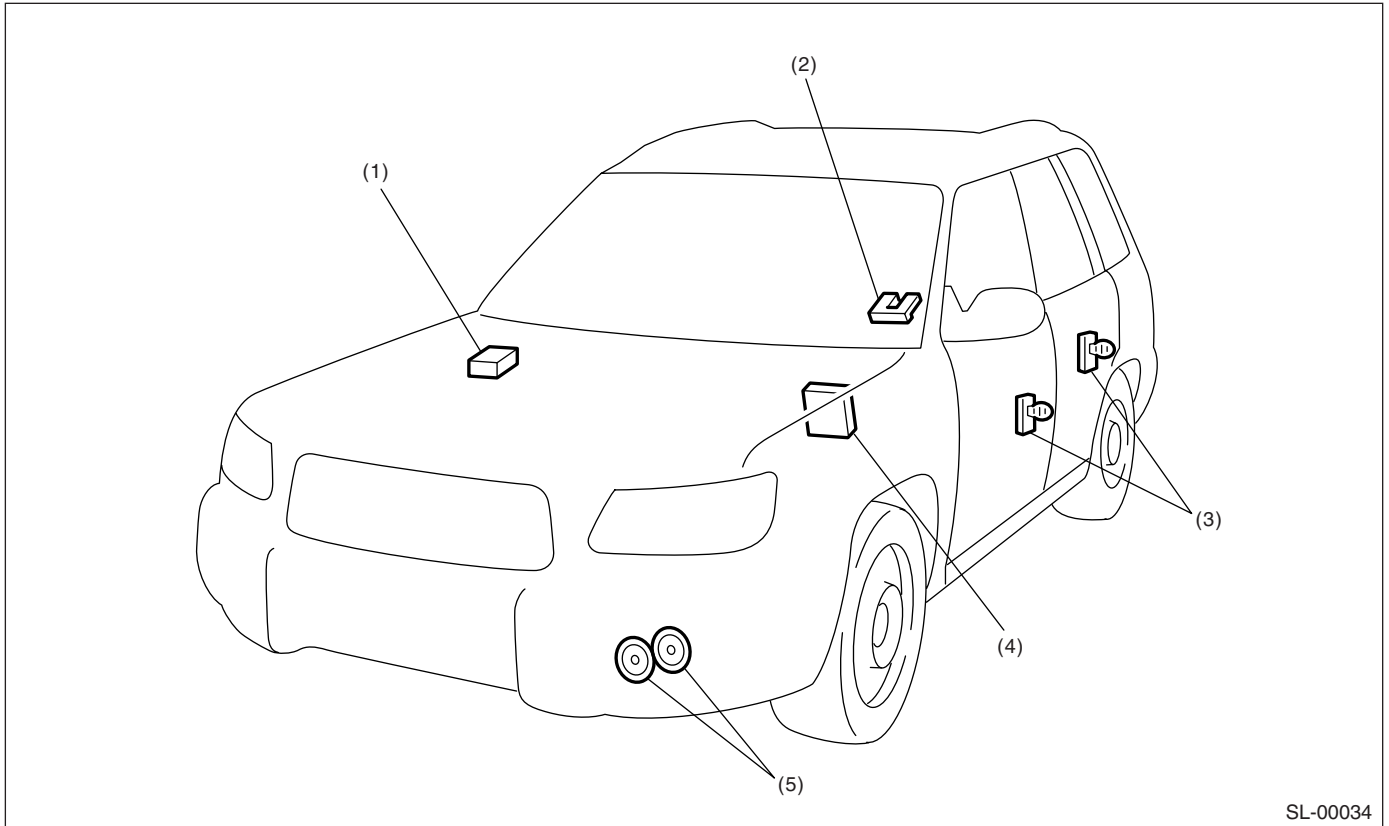
- (1) Hood lock ASSY
- (2) Lever ASSY
- (3) Hood cable ASSY
- (4) Pull handle ASSY
- (5) Fuel cable ASSY

**Tightening torque: N·m (kgf·m, ft·lb)**

**T1: 7.4 (0.75, 5.4)**

**T2: 33 (3.4, 24.6)**

### 4. KEYLESS ENTRY SYSTEM



SL-00034

(1) Keyless entry control module  
(2) Rear gate latch switch

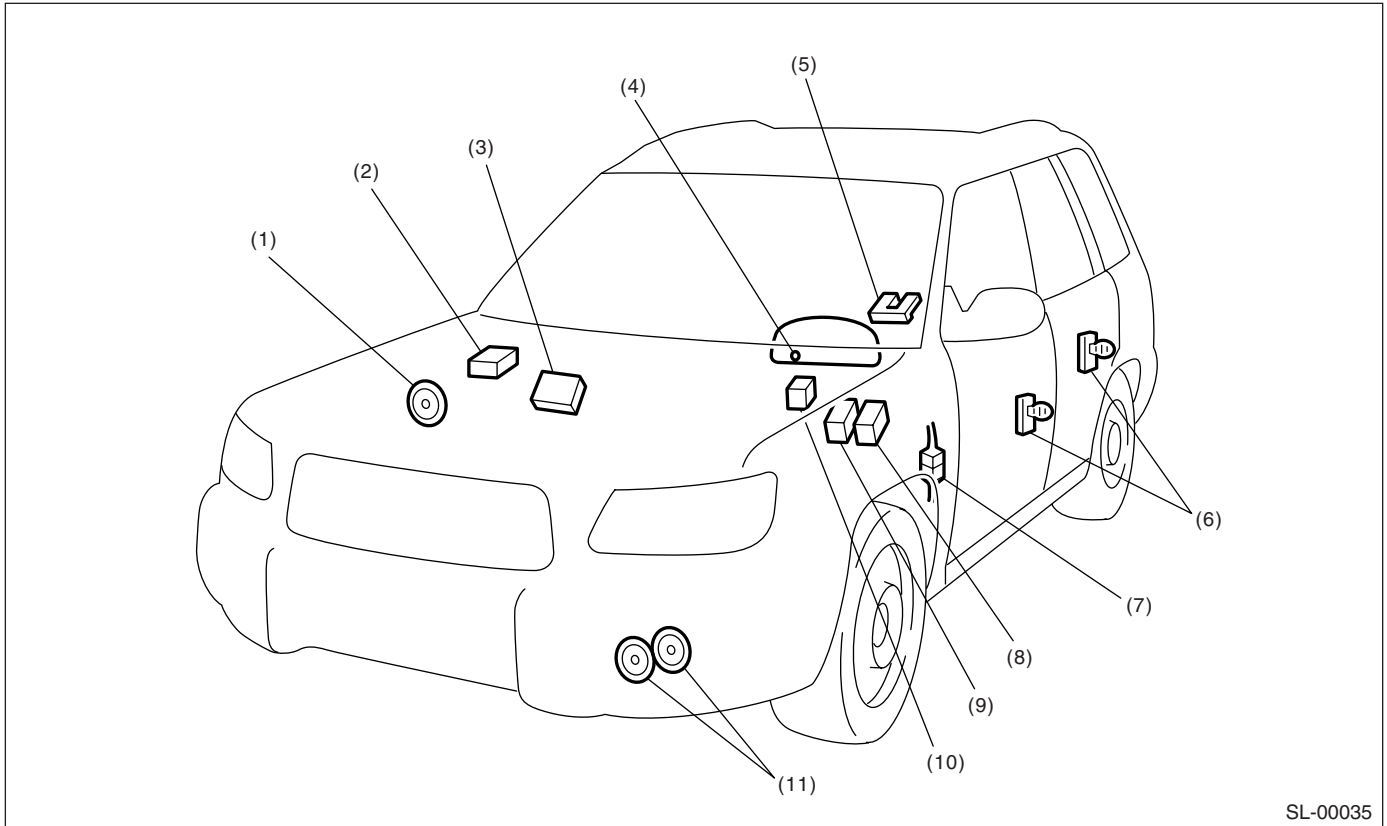
(3) Door switch  
(4) Body integrated module

(5) Horn

# GENERAL DESCRIPTION

## SECURITY AND LOCKS

### 5. SECURITY SYSTEM



SL-00035

- |   |   |   |
|---|---|---|
| (1) Security horn                                   | (5) Rear gate latch switch                                    | (9) Security horn relay (under steering column) |
| (2) Keyless entry control module                    | (6) Door switch   | (10) Horn relay (in main fuse box)              |
| (3) Security control module (behind the glove box)  | (7) Passive arm connector (on driver side front lower pillar) | (11) Horn                                       |
| (4) Security indicator light (in combination meter) | (8) Interrupt relay (under steering column)                   |   |

#### **B: CAUTION**

- Before disassembling or reassembling parts, always disconnect the ground cable from battery. When repairing radio, control module, etc. which are provided with memory functions, record the memory contents before disconnecting the ground cable from battery. Otherwise, these contents are cancelled upon disconnection.
- Reassemble parts in the reverse order of disassembly procedure unless otherwise indicated.
- Adjust parts to specifications contained in this manual if so designated.
- Connect the connectors and hoses securely during reassembly.
- After reassembly, ensure all functional parts operate smoothly.
- Airbag system wiring harness is routed near the electrical parts and switch.

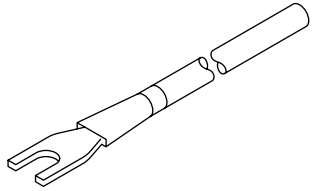
- All airbag system wiring harness and connectors are colored yellow. Do not use electrical test equipment on these circuits.
- Be careful not to damage the airbag system wiring harness when servicing the ignition key cylinder.

# GENERAL DESCRIPTION

SECURITY AND LOCKS

## C: PREPARATION TOOL

### 1. SPECIAL TOOLS

ILLUSTRATION	TOOL NUMBER	DESCRIPTION	REMARKS
 <p>ST-925580000</p>	925580000	PULLER	Used for removing trim clip.

### 2. GENERAL TOOLS

TOOL NAME	REMARKS
Circuit Tester	Used for measuring resistance and voltage.
Drill	Used for replacing ignition key lock.