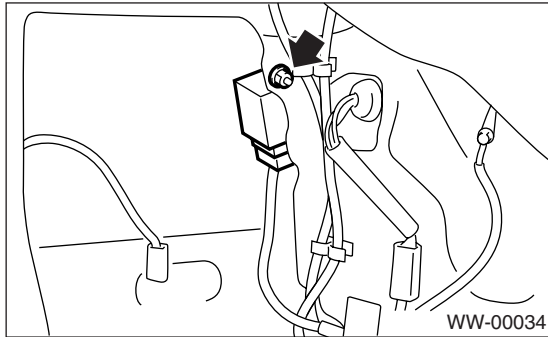


12. Wiper Control Relay

A: REMOVAL

- 1) Disconnect the ground cable from battery.
- 2) Remove the right quarter lower trim. <Ref. to EI-42, REMOVAL, Rear Quarter Trim.>
- 3) Loosen the nut to remove control unit.

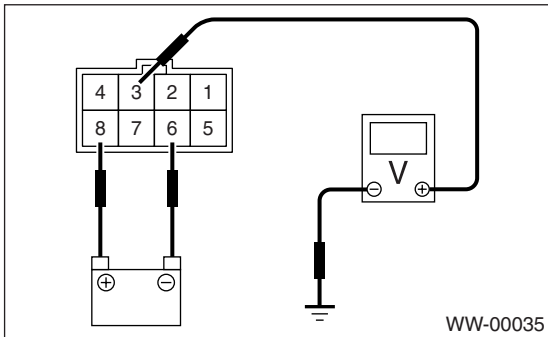


B: INSTALLATION

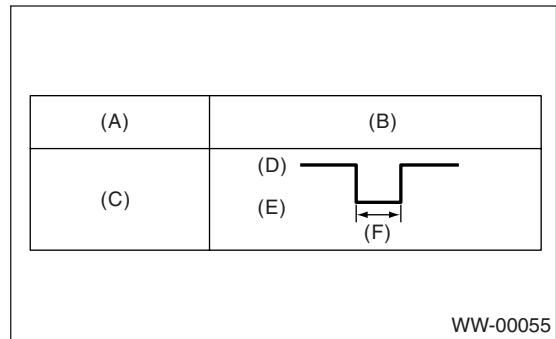
Install in the reverse order of removal.

C: INSPECTION

- 1) Disconnect the connector from the wiper control relay.
- 2) Connect the positive (+) lead from the battery to terminal 8 and the negative (-) lead to terminal 6. Connect the positive (+) lead from the voltmeter to terminal 3 and the negative (-) lead to ground.



- 3) Measure the voltage when the wiper relay is operated.



- (A) Switch position
- (B) Voltage
- (C) ON
- (D) 12 V
- (E) 0 V
- (F) 9±2 sec.

If operation is not as specified, replace the switch.

WIPER CONTROL RELAY

WIPER AND WASHER SYSTEMS
