

## 2. On-car Service

### A: ADJUSTMENT

#### 1. MECHANICAL APPLICATION TYPE

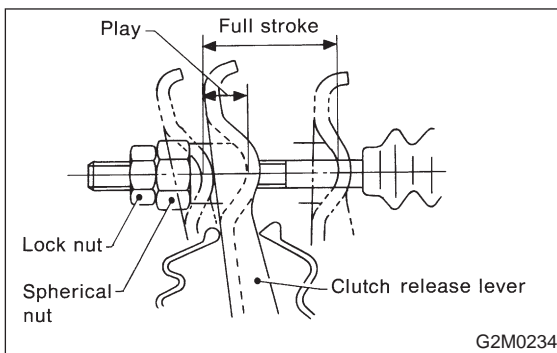
- 1) Remove release lever return spring from lever.
- 2) Adjust spherical nut so that the play is within the specified value at the lever end (center of spherical nut).

**CAUTION:**

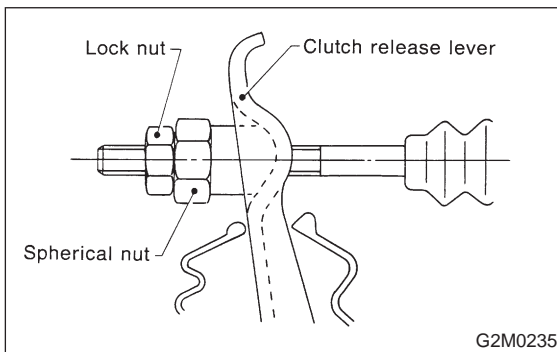
Take care not to twist the cable during adjustment.

**Play:** 3 — 4 mm (0.12 — 0.16 in)

**Full stroke:** 24 — 26 mm (0.94 — 1.02 in)



- 3) Upon completion of adjustment, securely lock spherical nut with lock nut.

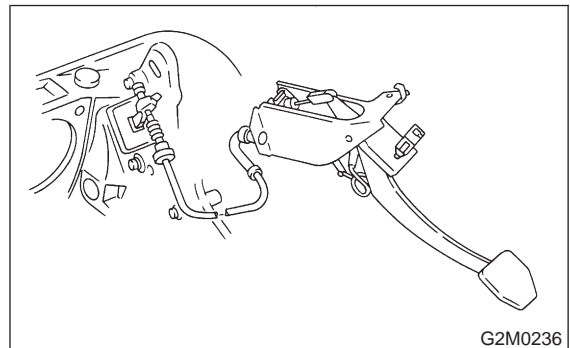


- 4) Install return spring on lever.

**NOTE:**

Hook the long hook side of the return spring with the lever.

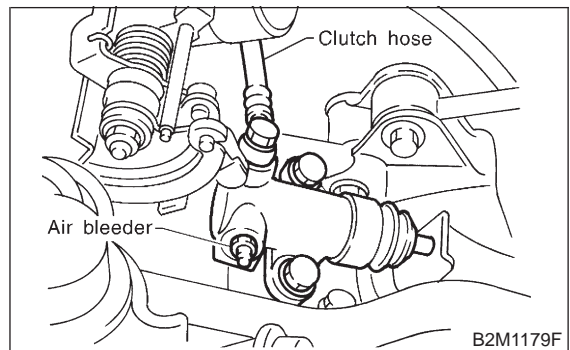
- 5) Depress clutch pedal to assure there is no abnormality in the clutch system.



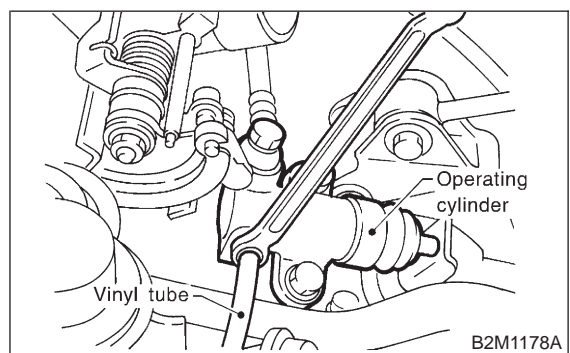
#### 2. HYDRAULIC APPLICATION TYPE

Bleed air from oil line with the help of a co-worker.

- 1) Remove air chamber.
- 2) Fit one end of a vinyl tube into the air bleeder of operating cylinder and put the other end into a brake fluid container.



- 3) Slowly depress the clutch pedal and keep it depressed. Then open the air bleeder to discharge air together with the fluid. Release the air bleeder for 1 or 2 seconds. Next, with the bleeder closed, slowly release the clutch pedal.



- 4) Repeat these steps until there are no more air bubbles in the vinyl tube.

**CAUTION:**

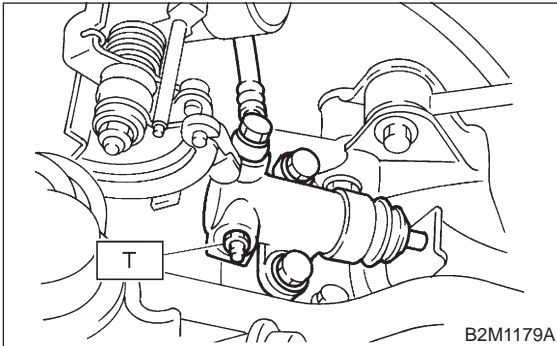
Cover bleeder with waste cloth when loosening it, to prevent brake fluid from being splashed over surrounding parts.

3. Release Bearing and Lever

5) Tighten air bleeder.

**Tightening torque:**

**T:  $18 \pm 3$  N·m ( $1.8 \pm 0.3$  kg·m,  $13.0 \pm 2.2$  ft·lb)**



6) After depressing the clutch pedal, make sure that there are no leaks evident in the entire system.  
 7) After bleeding air from system, ensure that clutch operates properly.

**3. Release Bearing and Lever**

**A: REMOVAL**

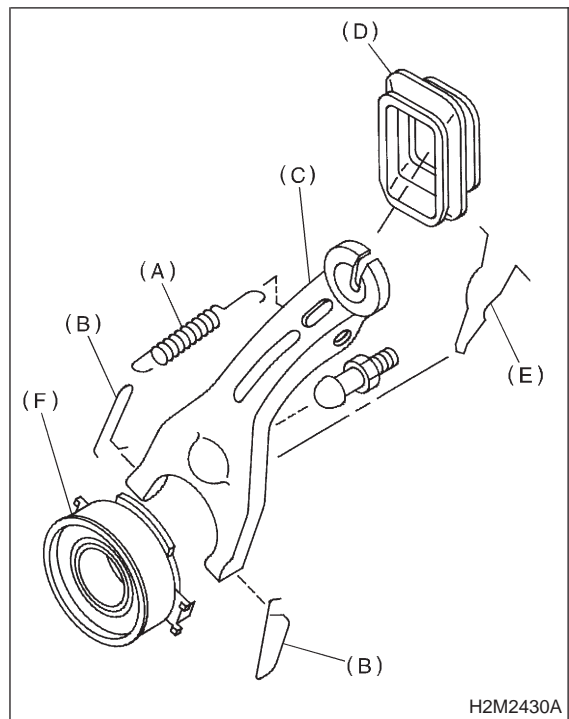
**1. MECHANICAL APPLICATION TYPE**

- 1) Remove release lever return spring.
- 2) Remove the two clips from clutch release lever and remove release bearing.

**CAUTION:**

**Be careful not to deform clips.**

- 3) Remove release lever seal.



- (A) Release lever return spring
- (B) Clip
- (C) Release lever
- (D) Release lever seal
- (E) Retainer spring
- (F) Clutch release bearing

- 4) Remove release lever retainer spring from release lever pivot with a screwdriver by accessing it through clutch housing release lever hole. Then remove release lever.

